

JOSS2021

CHORUS Forum - FAIR Data from Funding to Publication

# Funding data workflow at JST efficiency, accuracy, and compliance with rules

June 18, 2021

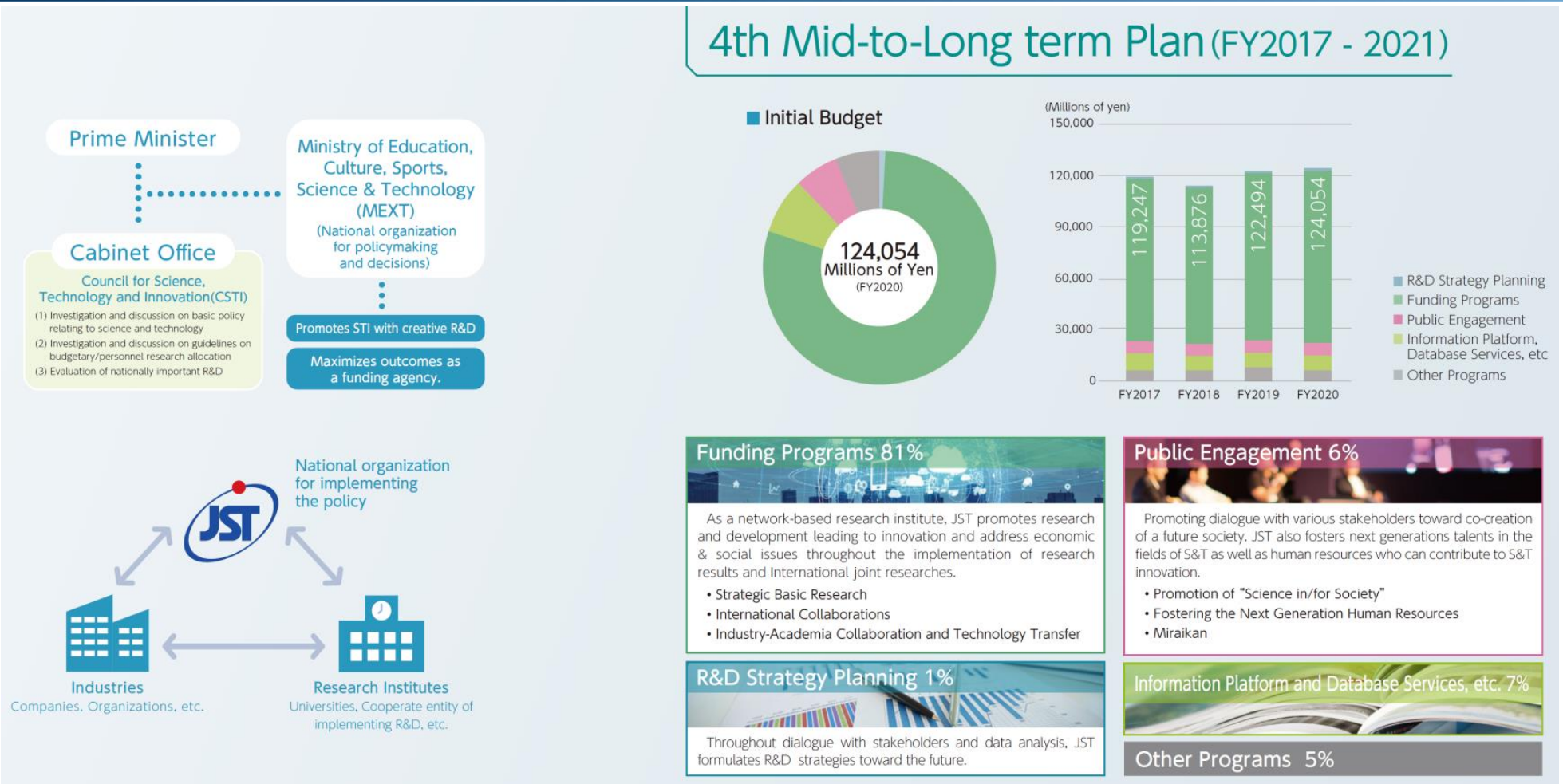
Ritsuko Nakajima

Director, Department for Information Infrastructure  
Japan Science and Technology Agency



科学技術振興機構

# About JST



# JST Policy on Open Science

- JST Policy on Open Access to Research Publications and Research Data Management (April 1, 2017)

- JST Policy on Open Access to Research Publications and Research Data Management

- I. Open Access to Research Publications

- required to be made publicly available in principle.

- II. Handling Research Data

- Development of Data Management Plan

- required to develop a data management plan defining how to manage research data.

- Preservation, Management, and Access to Research Data

- recommended that underlying data should be made openly available.

- Implementation Guidelines: JST Policy on Open Access to Research Publications and Research Data Management

# Guide on Open Science for researchers

## 8. Handling of research results

### – Open access to research papers and data management –

The Cabinet's "Expert Panel on Open Science, based on Global Perspectives" published its report entitled "Promoting Open Science in Japan" in March 2015. The report compiles the Cabinet's basic stance and policy on open science. The report stipulates that governmental ministries and agencies, institutions distributing funds, universities and research institutions and so on will formulate guidelines and action plans for implementation of open science. Moreover, the Fifth Science and Technology Basic Plan approved in January 2016 by the Cabinet, states that publicly funded research results will be utilized to their absolute maximum and that this will be Japan's basic stance on open science promotion.

Based on this trend, JST published in April 2017 the JST Policy on Open Access to Research Publications and Research Data Management. This policy stipulates JST's specific philosophy regarding providing open access to scientific papers arising from the research and the storage, management and publicizing of research data.

Please ensure open access to your ERATO research results (papers)

With regard to research results (papers) obtained through the ERATO projects, it is recommended that in principle they are made public through institutional repositories and publications presupposing open access.

Please create and implement a data management plan.

Researchers who have been selected as Research Directors from FY2016 onwards are requested to create data management plans detailing their plan and policy for the storage, management, publicizing or non-publicity of research data arising as research results, and submit these plans and policies along with their Research Plans to JST.

Furthermore, they are requested to store, manage and implement the publicizing of research data in line with these data management plans.

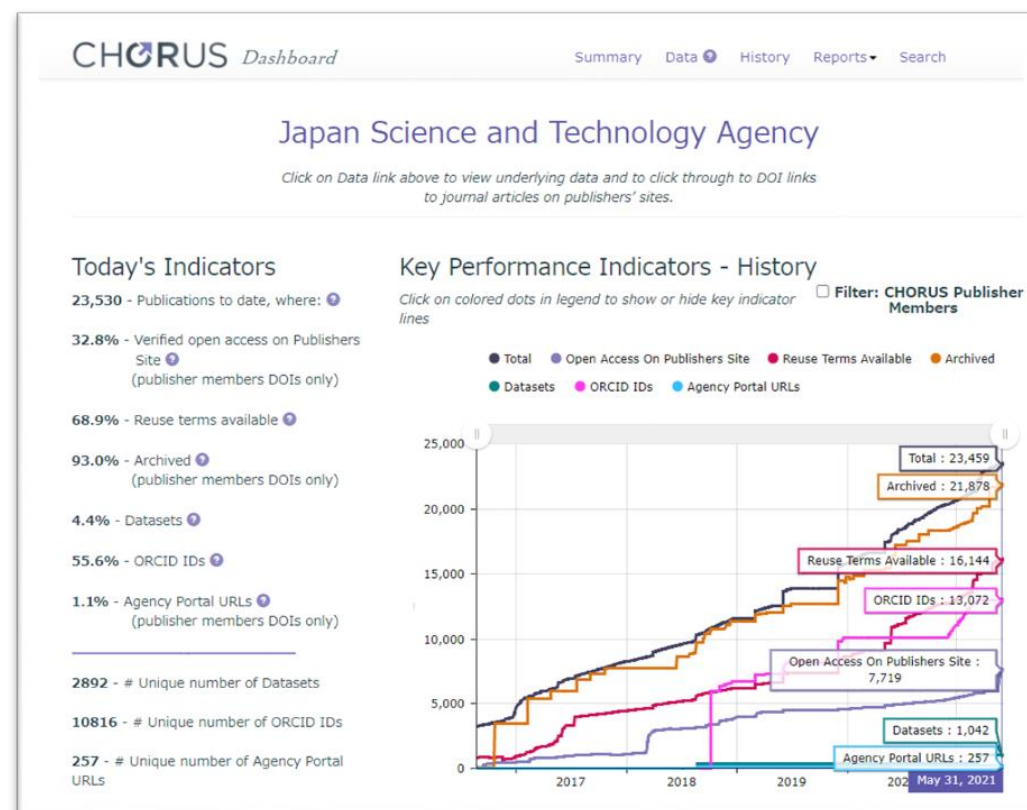
See below for further details.

○ JST Policy on Open Access to Research Publications and Research Data Management:

[https://www.jst.go.jp/EN/about/openscience/policy\\_openscience\\_en.pdf](https://www.jst.go.jp/EN/about/openscience/policy_openscience_en.pdf)

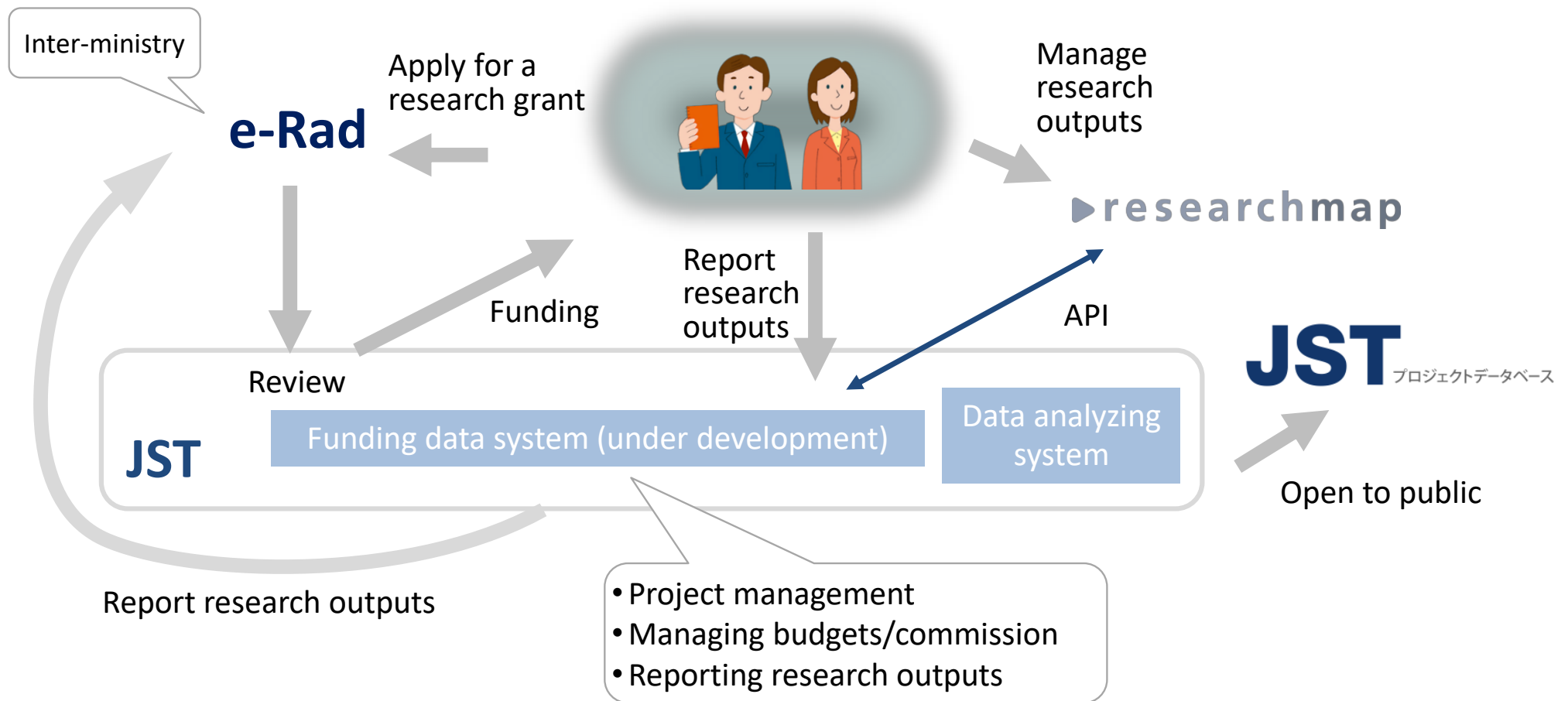
○ Implementation Guidelines: JST Policy on Open Access to Research Publications and Research Data Management

[https://www.jst.go.jp/EN/about/openscience/guideline\\_openscience\\_en.pdf](https://www.jst.go.jp/EN/about/openscience/guideline_openscience_en.pdf)



Guide for researchers (Ex. of ERATO Guide)

# Funding Data Workflow at JST (The system is under development)





# Researchers Directory

Profile

Research  
outputs

Research  
projects

<https://researchmap.jp/?lang=en>

Japan Science and Technology Agency

researchmap

## Database of Information on Japanese Researchers



<https://researchmap.jp/public/inquiry/?lang=english>

<https://researchmap.jp/?lang=english>

**researchmap** is a platform for managing, publishing, and sharing information on researchers. Over 300,000 researchers have registered their profiles and research outputs on researchmap. researchmap has been integrated into the systems of universities and provides features to help users find researchers for industry-academia collaboration and joint research.

[Researcher Search](#) [Community Search](#) [Contact Us](#)



ようこそ!  
新しくなった researchmap へ!  
業績管理をもっと簡単に、もっと快適に。



Registered researchers  
314,734



Page views per month  
17,622,853



Recorded achievements  
24,630,802



Linked universities  
241



Linked external database  
10

(As of 2020)

# JST Project Database

The JST Project Database is a service that allows users to search and browse information on research projects promoted by JST.

More than 23,000 research proposals and 6,700 reports are available.

The screenshot shows the JST Project Database search results for "COVID-19". The search results are displayed in a list format, with the first result being "1. ディープラーニングを用いた都市モビリティのピーク予測 (DARUMA)". The search results are filtered by "絞り込み" (Filter) and "表示件数" (Number of items to display). The search results are also sorted by "研究期間 (年度)" (Research period (Year)).

**絞り込み**

制度・事業

- ☐ J-RAPID 12
- ☐ SICORP 9
- ☐ CREST 4
- ☐ RISTEX(社会技術研究開発) 3
- ☐ 研究成果最速展開支援プログラム(A-STEP) 2
- ☐ 探索加速型 1
- ☐ 大学発新産業創出プログラム(START) 1

研究課題種別

- ☐ 研究課題 30
- ☐ 研究領域 2

研究期間 (年度)

2020 ~ 2021

**検索結果: 32件 / COVID-19**

表示件数: 20

**1. ディープラーニングを用いた都市モビリティのピーク予測 (DARUMA)**

国際的な科学技術共同研究などの推進 > 国際科学技術共同研究推進事業 > SICORP > CONCERT-Japan

**研究代表者** シュマッカー ヤンディヤク 京都大学、大学院工学研究科、准教授

**研究期間 (年度)** 2021 - 2023

**概要** 本研究は、COVID-19が人々のモビリティパターンに与えた影響について分析するものである。具体的には、モビリティデータ、ソーシャルメディアデータ、製品価格データをインプットデータとして、ディープラーニングを行う。これらのデータを用いて、都市交通パターンのシミュレーションを行うことで、渋滞やモビリティパターンの変化を明らかにする。また、ケーススタディとして、マドリッド、ブダペスト、京都を対象とし、マドリッドでは、通信データ、ブダペストでは道路交通データ、京都ではGPSデータ、携帯電話の集計データ、サプライチェーンデータを統合したデータを使用する予定である。本研究で得られた知見は、ポストコロナにおいても適用可能で、レジリエントな都市政策、交通政策の立案に貢献することが期待される。

**研究領域** レジリエント、安全、セキュアな社会のためのICT

**2. 地方都市の活力・脆弱性・適応性の変容に関する評価 (3VRUT)**

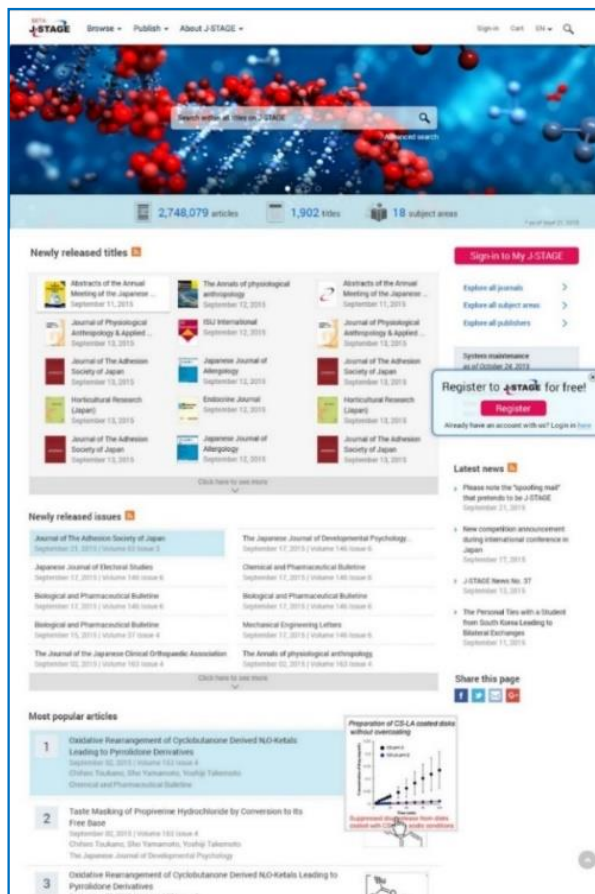
国際的な科学技術共同研究などの推進 > 国際科学技術共同研究推進事業 > SICORP > CONCERT-Japan(SICORP)

**研究代表者** 向井田 明 一般財団法人リモートセンシング技術センター、研究開発部、ソリューション事業第二部長

**研究期間 (年度)** 2021 - 2023

**概要** これまでのレジリエンスの評価や指標は、現代の無形の対象を捉えることが難しく、空間的な生物物理学・社会経済的データセットを十分に組み合わせることができていない。本研究は、先進国の地方都市におけるサイバースペースと物理的空間の接点に存在するリスクと脅威を評価、定量化、分類するための手法を開発することを目的とする。この中で、定量的なデータの取得と視覚的、形態学的分析にリモートセンシングを用い、社会経済学的研究から地理統計情報を導出する。対象はドイツ、スペイン、ポーランド、日本における過疎化と都市移動に直面しているケーススタディを通じて、類似しない社会行動を持つ国ごとに2つの異なるシナリオを検討する。あわせて、2008年のリーマンショック、2015年から2016年の欧州難民危機、2020年のCOVID-19によるソーシャルディスタンスの影響を考察する。

# J-STAGE – journal platform for Japanese academic societies



[www.jstage.jst.go.jp](http://www.jstage.jst.go.jp)

- ◆ J-STAGE is electric journal platform operated by JST since 1999 for Japanese academic societies
- ◆ Purpose
  - ◆ To promote electric publication of journals from Japanese academic societies
  - ◆ To disseminate those publications through the internet and to promote open access
- ◆ Contents (as of June. 3, 2021)
  - Titles : 3,305
  - Articles : 5,237,144 (including proceedings)
- ◆ About 90% of journals are free to read



# Linking research data and journal articles

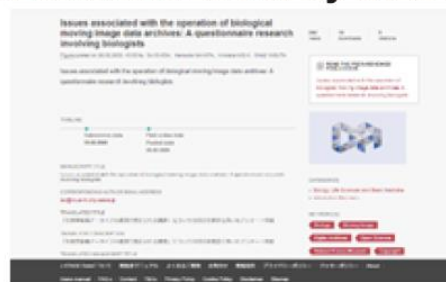


## Promote Research Data Sharing and Reuse



[data-contact@jstage.jst.go.jp](mailto:data-contact@jstage.jst.go.jp)<https://jstagedata.jst.go.jp/>

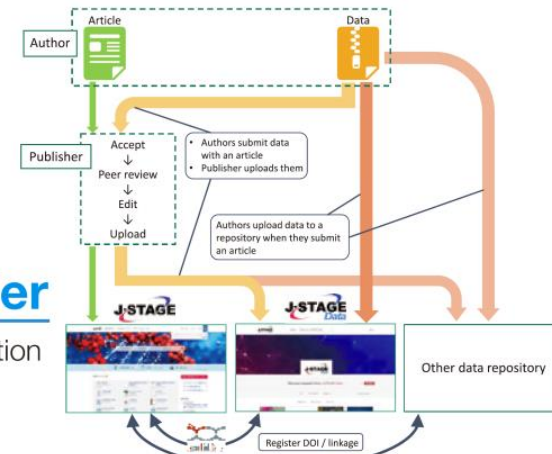
**J-STAGE Data** is a data repository launched in 2020 for promoting Open Science in Japan. J-STAGE Data allows J-STAGE journals or the author(s) to upload the data used in their articles\*. All data is Open Access and freely available to cite, share and reuse under the conditions set by their owners or publishers.



## J-STAGE Data makes data utilization easier

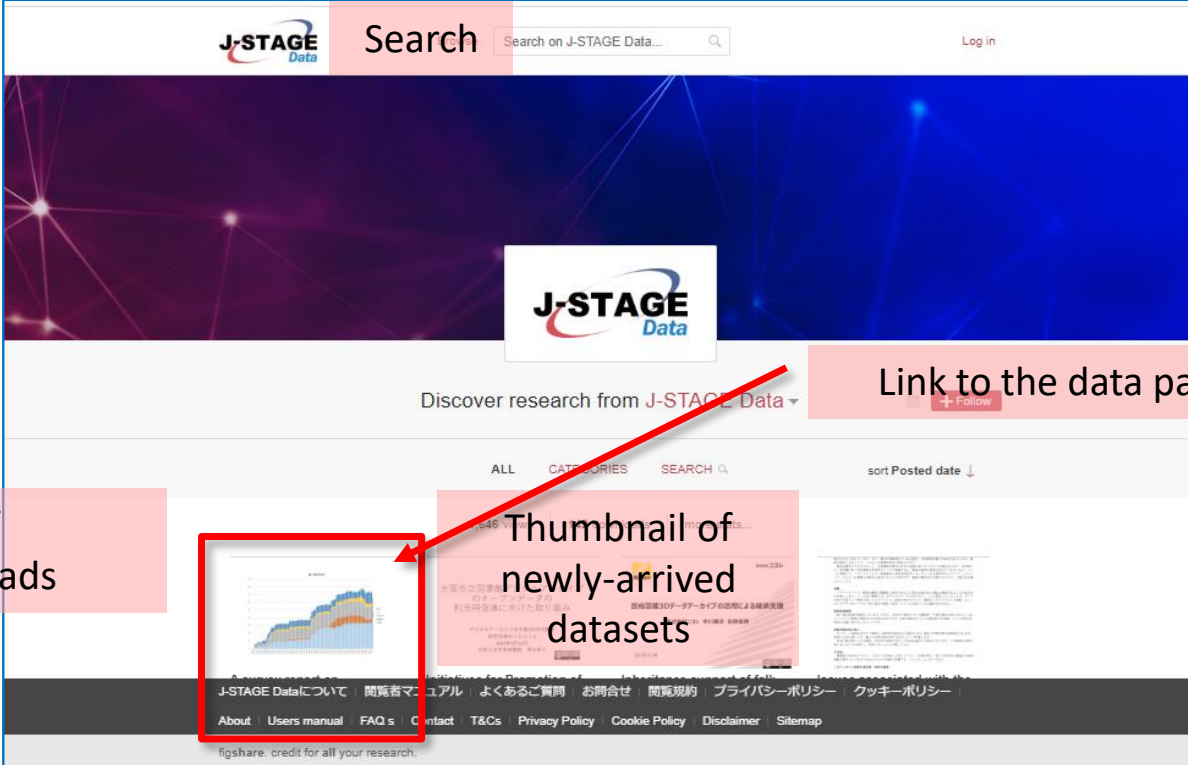
- A DOI is automatically added to each data item, facilitating global dissemination
- Data items on J-STAGE Data are linked to corresponding J-STAGE articles  
You can access corresponding articles with one click
- All J-STAGE Data items are labeled with the license agreed upon by its data creators, and you can reuse each item under the specified conditions

\*As of October 2020, the repository is in a pilot phase. Only selected journals are allowed to upload data.



# J-STAGE Data <https://jstagedata.jst.go.jp/>

- Data repository to publish research data that underline articles on J-STAGE.
- March 2020 released
- Open Access
- DOIs are registered
- 6 journals, 157 datasets (2021/5/31)



The screenshot shows the J-STAGE Data website interface. A red box highlights a line graph titled 'Statistics of Views/Downloads' on the left. A red arrow points from a text box 'Link to the data page' to a '+ Follow' button. Another red arrow points from a text box 'Thumbnail of newly-arrived datasets' to a thumbnail image of a dataset. The website header includes the J-STAGE Data logo, a search bar, and a 'Log in' link. The main content area displays 'Discover research from J-STAGE Data' and a list of datasets with filters for 'ALL', 'CATEGORIES', and 'SEARCH'. The footer contains links for 'About', 'Users manual', 'FAQs', 'Contact', 'T&Cs', 'Privacy Policy', 'Cookie Policy', 'Disclaimer', and 'Sitemap'.

Statistics of Views/Downloads

Link to the data page

Thumbnail of newly-arrived datasets

# Usage

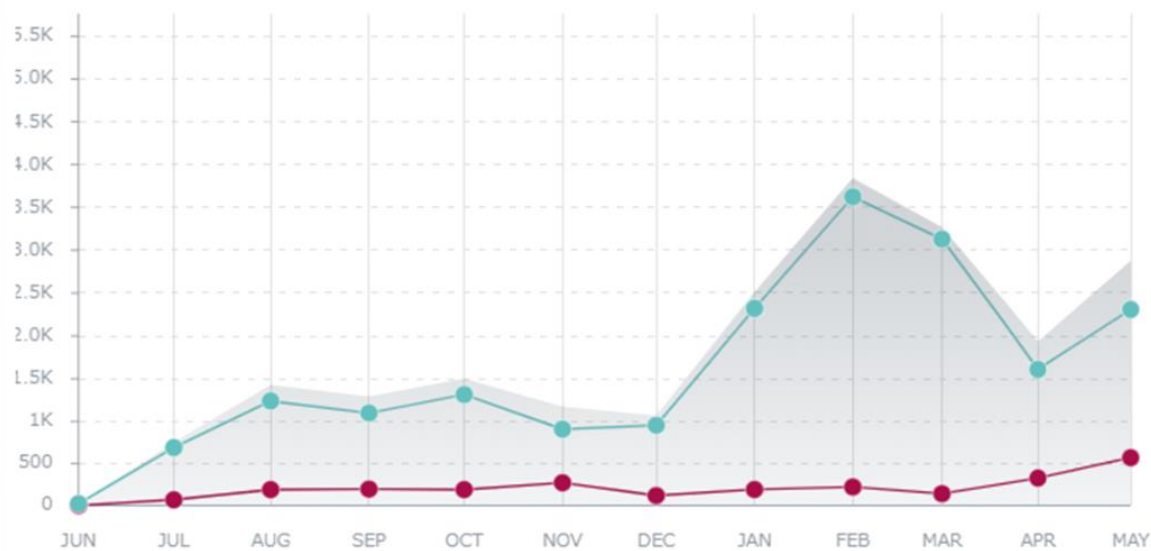
In the last year ▼ J-STAGE Data had:

👁️ **21,071** views

📄 **2,917** downloads

see by: Monthly view ▼

☒ Views ☒ Downloads ☒ Total



...a most activity of 51% from **United States**, 41% from **Japan**, 3% from **Netherlands**...

☒ Map ☐ Table

